

## SIT SPORTS SAFETY TRACKING SYSTEM – FIA WRC 2013

### COLLECTION

The FIA Rally Safety Tracking System will be collected on Tuesday, 18<sup>th</sup> June 2013 from 15h00 to 20h00 at Stand SIT Sport at the Olbia Service Park.

### SIT SPORTS SAFETY TRACKER UNIT

- The SIT Sports Tracking unit must be fitted and connected in all competitors' cars before arrival at scrutineering, where it will be checked by SIT Sports engineers.
- The tracking unit must be used together with the tracker base. This allows the quick fitting and removal of the unit.
- **Any problems must be dealt with during the 10' service so the unit has to be easy to reach and remove.**



Front view

Back view

Dimensions: 105mm x 169mm x 60.5mm (WxLxH)

Weight: 0.980 Kg

GSM – Fackra female

GPS 1 – Fackra female

GPS 2 (backup) – SMA female

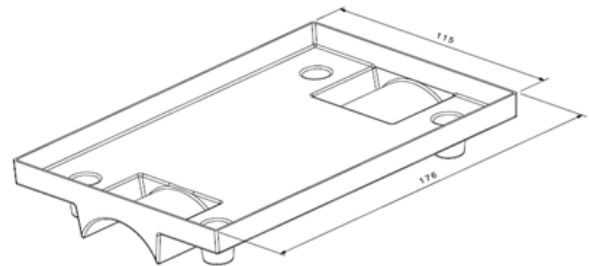
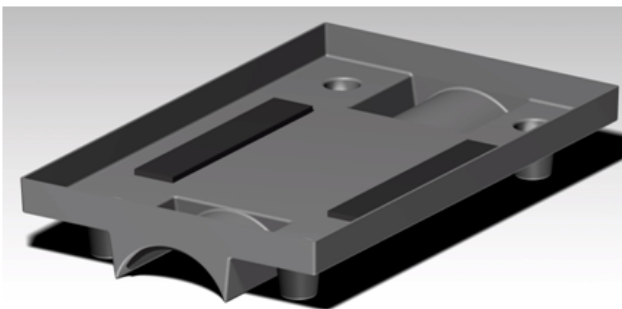
UHF – PL259 female

(NOTE: All antennas will be supplied with the Tracker)



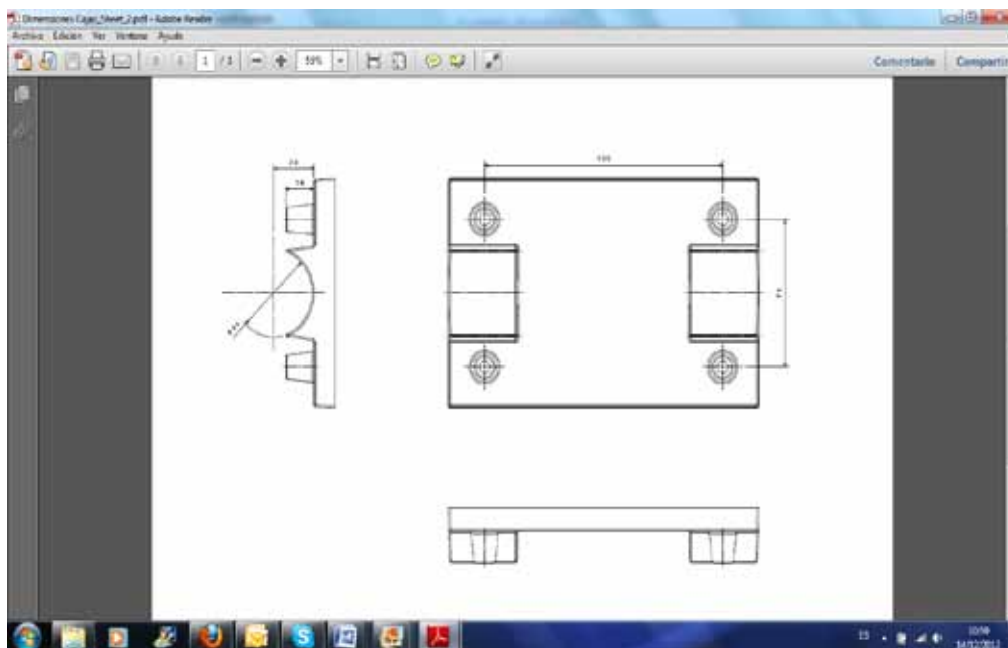
The tracking unit & base must be firmly fitted either on the floor or on the roll cage **behind the seats**.

**SIT SPORTS SAFETY TRACKER BASE**



Dimensions: 115mm x 176mm x 29mm (WxLxH)

Weight: 0.097 Kg



The tracker box must be attached to the base with two Velcro straps and secured with a full round Ty-rap.



#### FIA SAFETY EMERGENCY CONSOLE



The FIA Emergency Console must be easily accessible by both the driver and the co-driver and fitted in a place where the lights can be easily seen by the crew **while driving on stage** and from the outside of the car.

#### POWER CABLE

Approx. length 3000mm

1. There is only one 'Y' power splitter cable – the main end is connected to the tracking box and the two other ends to the safety console and to power supply (+VCC, Ground and Ignition)
2. Please ensure direct connection to power (12VDC) before the circuit breaker with a 5A fuse protection. The ignition line must supply +12VDC while the engine is running and dropped to 0v when the engine stops.
3. Do not cut, shorten or bend the cable especially near the connector.

#### UHF ANTENNA AND CONNECTOR

Approx length of the connector – 5250mm



A hole should be made to fix the antenna on the roof of the car; it should be near the back of the roof away from the edges.

### GPS 2 ANTENNA

This GPS antenna (as well as UHF antenna) should be also installed on the roof of the car with clear view to the sky.



- Cable length: 3.000 mm
- Connector: SMA male
- Installation: Outdoor on the roof of the car.

UHF and GPS 2 antenna  
should be installed on the roof of the car

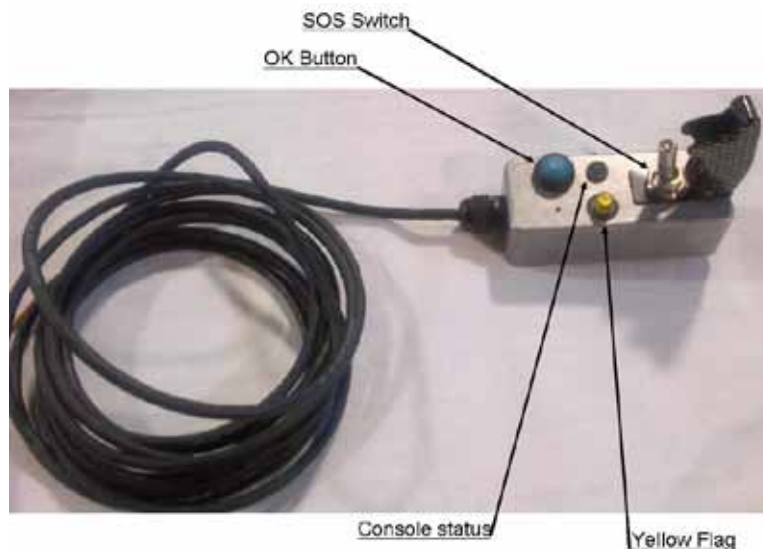


**DUAL GSM/GPS1 ANTENA**



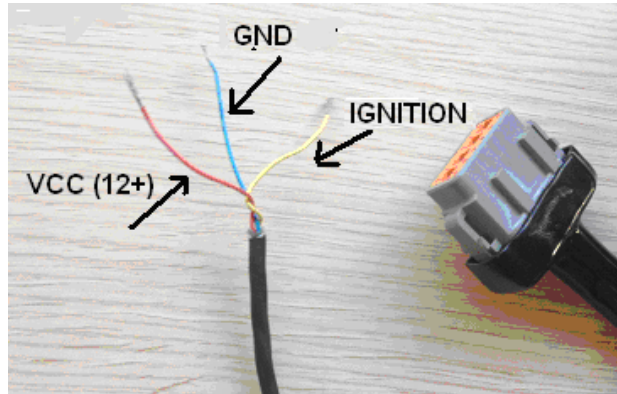
- Cable length: 2.500 mm
- Connector: Fackra x 2 (Blue GPS / Red GSM)
- Installation: Indoor (Velcro or tape) on front dashboard or at the back making sure that it has clear view to the sky.

## FIA SAFETY TRACKING SYSTEM



1. SOS switch: protected with a cover to avoid accidental use. The switch must be activated in case of emergency in order to raise the alarm.
  - a. Deactivate the switch to cancel SOS if there is no emergency
  
2. Yellow Flag: the light is flashing when Clerk of the Course activates the Electronic Yellow Flag. There is also a continuous beep when the light is on.
  
3. Console status (green light)
  - Light flashing slowly (1sec ON/1sec OFF): console is ON and functioning normally
  - Light flashing rapidly (300ms ON / 300ms OFF): emergency mode (SOS switch is activated)
  - Light on: 'on stage'
  - Light off: console is turned OFF
  
4. OK button has three different functions:
  - Press the button to confirm to Clerk of the Course that you have seen the Yellow Flag
  - If the car is stopped on stage for more than 60 seconds, an alarm will be activated at the Rally Control unless you press the OK button

## 5. Wiring Description



Signal	Cable
VCC (+12V)	Red
GND	Blue
IGNITION	Yellow

- The red and blue wires should be directly connected to the battery before the master switch.
- The yellow wire must be connected under the ignition key to 12 volts (+12 V. when motor is ON, open when motor is OFF).

### IMPORTANT

- The SIT Sports tracking unit and base must be fitted and connected before arrival at scrutineering where it will be checked by SIT Sports engineers.
- If you retire from the rally you must return all tracking equipment to SIT Sports at the Service Park as it was given to you, as soon as possible.
- Any breakages will have to be paid for by the competitor.
- The SIT Sports Tracking unit & base and all loaned equipment must be returned to SIT Sports within 30 minutes of the results being declared final.